

PULSAtrol[®]

MICROPROCESSOR BASED CONTROLLERS & MONITORS

For Fluid, Timer and Other Process Applications



An ISO 9002 System-Certified Company

PULSAFEEDER[®]

A Unit of IDEX Corporation

IDEX
IDEX CORPORATION



Choose PULSAtrol® for Affordable, High Performance Controllers and Monitors that are Easy to Specify, Easy to Use.

PULSAtrol® controllers and monitors offer versatile, accurate, easily specified solutions to your fluid control problems. A modular approach to hardware and software design has created a line of standard units which include the most needed features for optimum levels of performance.

Each of these units can be custom-tailored to meet your performance requirements, merely by adding what you need from a long list of available options.

Picking the right controller or monitor is easy, just select the model that's right for your applications:

- Cooling and Boiler Water Treatment
- Programmable Timers

Then choose the level of sophistication you need. Series 100, Series 200 and Series 300 units offer different sets of standard features that let you buy just the right amount of performance and capability.



Series 100

These units offer a basic solution to many control problems at a very attractive price.

Key Features:

- NEMA 4X High Impact Resistant PVC Enclosure
- Hi/Lo Alarm Indicator
- 90-250 VAC, 50/60 Hz Power Requirement
- Front Panel H/O/A Control
- Receptacle Cords
- 10-Bit A/D Resolution
- Lighted 1 x 8 Alphanumeric Display
- Inputs: 1 Analog/2 Digital
- Output: 1 Analog/1 Alarm Dry Contact/2 Relay



Series 200

These medium-capability models have a wider range of standard features, a broader selection of options, and more inputs and outputs.

Key Features:

- NEMA 4X High Impact Resistant Polystyrene Enclosure
- Hi/Lo Alarm Indicator
- 90-250 VAC, 50/60 Hz Power Requirement
- Recessed Front Panel Power Switch
- Receptacle Cords
- Lockable Viewing Window
- Security Code
- 10-Bit A/D Resolution
- Back-Lit 2 x 16 Alphanumeric Display
- Inputs: 2 Analog/3 Digital
- Output: 2 Analog/1 Alarm Dry Contact/4 Relay

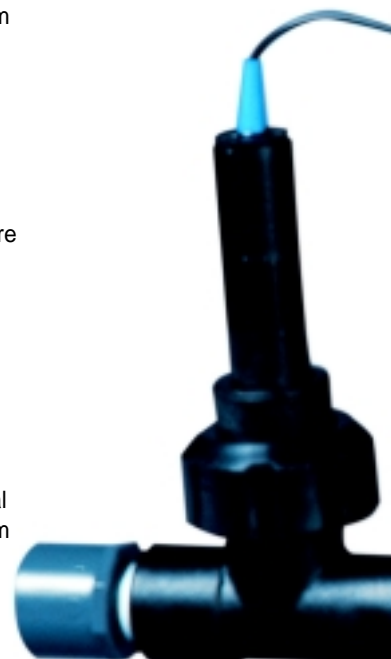


Series 300

This is the top of the PULSAtrol® line. These units offer great versatility and performance, thanks to their complete collection of standard features, the wide choice of available options, and the large number of inputs and outputs available.

Key Features:

- NEMA 4X High Impact Resistant Polystyrene Enclosure
- Hi/Lo Alarm Indicator
- 90-250 VAC, 50/60 Hz Power Requirement
- Recessed Front Panel Power Switch
- Receptacle Cords
- Lockable Viewing Window
- Security Code
- 10-Bit A/D Resolution
- Back-Lit 64 x 128 Pixels Dot Matrix Graphics Display
- Inputs: 4 Analog/4 Digital
- Output: 2 Analog/1 Alarm Dry Contact/6 Relay



Advanced Technology and Common Sense Design Deliver the Features You Want Most.

PULSAtrol® controllers and monitors use the latest in microprocessor based circuit design to provide a superior level of capability.

The use of surface mounted components allows for more sophisticated circuitry and increased quality.

Combined with a modular hardware and software design philosophy, PULSAtrol® controllers deliver the kind of operational flexibility and versatility you'd expect from the industry leader.

MODULAR FLOW ASSEMBLY

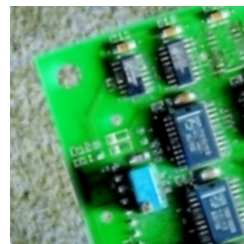
constructed of tough, durable glass filled polypropylene (GFPPL)— withstands the rigors of use in the industrial world.

SURFACE MOUNT TECHNOLOGY (SMT)

circuit board design provides higher quality and dependability.

RECEPTACLE CORDS

make it quick and easy to connect and disconnect any electrical device being controlled.



BIG, BRIGHT ALPHANUMERIC DISPLAY

shows operating conditions at a glance.

DOUBLE O-RING SEALED PROBES

held in by screw-on GFPPL nuts connect quickly without tools.

THREADED OR SLIP FITTINGS

for easy installation.

INTEGRAL SAMPLE PORT

for quick sampling.

SERIES 300 SHOWN

LOCKABLE VIEWING WINDOW

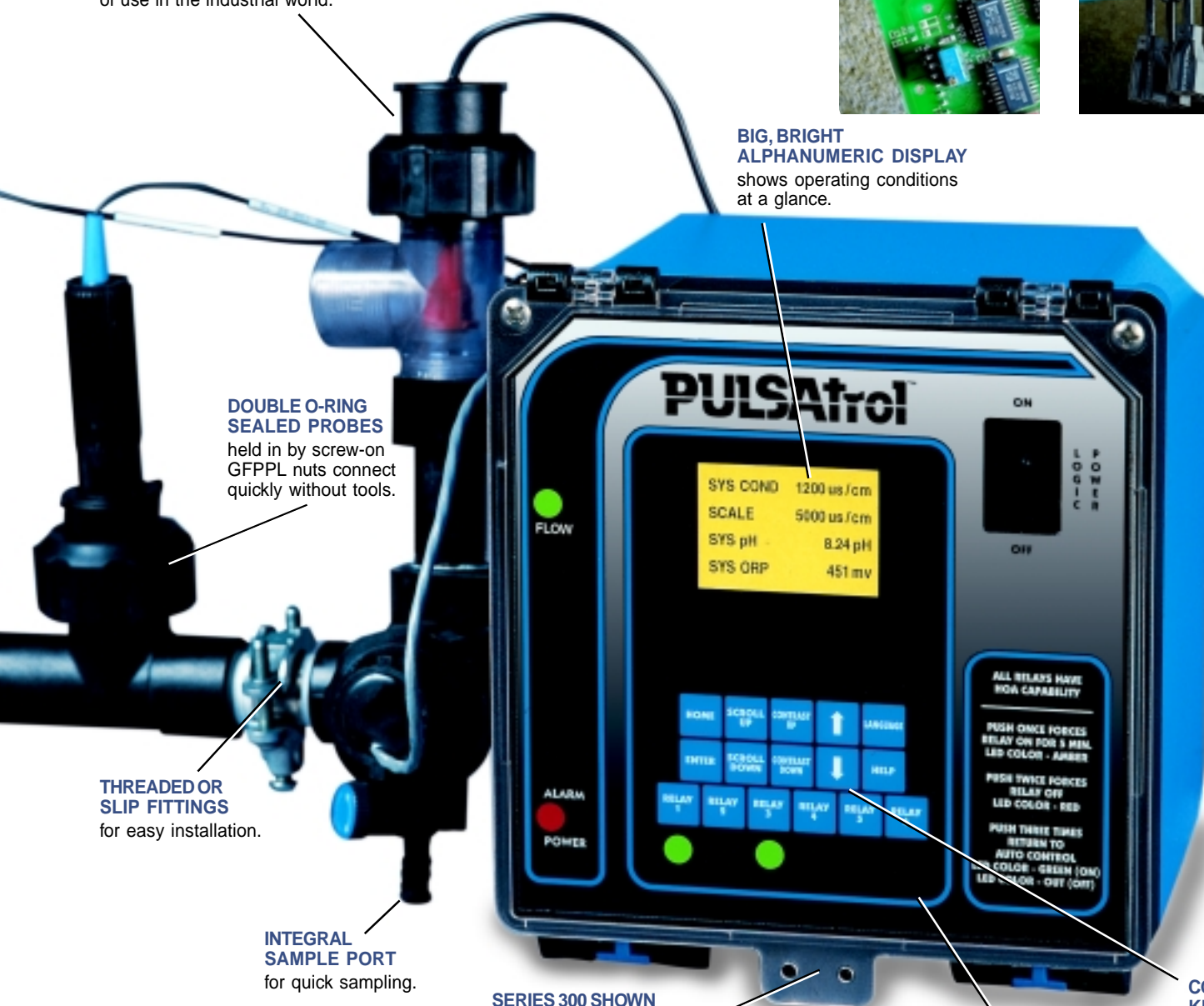
(Series 200/300) allows quick visual scan of current operation, protects against unauthorized changes.

NEMA 4X ENCLOSURE

constructed of high impact polystyrene (Series 200/300) delivers integrity even under rugged duty conditions.

CONVENIENT KEY PAD

for quick menu access and manual relay control.



PULSAtrol® is the Right Choice, from Basic Control Requirements to the Most Complex Multi-Parameter Control or Multi-System Applications.

Cooling Water Treatment (MCT)

For open recirculating systems, environmental and energy awareness place critical demands on cooling systems. Sophisticated chemical treatment programs are becoming the norm, necessitating automatic control of injection systems. PULSAtrol® units offer the right range of features and performance to meet these needs.

Boiler Water Treatment (MBC)

A part of any water treatment program is the control of total dissolved solids to help prevent scale. PULSAtrol® can automatically enhance any treatment program with conductivity control to dependably regulate TDS. Maintain chemical residuals by use of one of four chemical feed modes.

Programmable Timers (MPT)

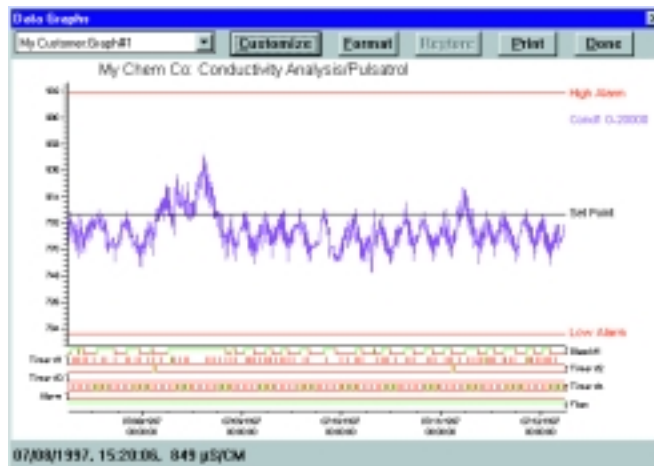
The PULSAtrol® 28-Day Program Timer is ideal to add biocides to open recirculating cooling systems or for any application requiring predetermined periodic control.

The selectable timer is suited for open recirculating cooling towers and boilers and other process applications in which a proportional control, a limit timer or 10 minute percent cycle timer is needed.

***PULSAtrol® — The Right Choice —
For ALL your applications.***

PULSAworks remote communication software keeps you connected to your PULSAtrol® controller.

Communicate with a Series 200 or 300 PULSAtrol® via optional modem to minimize service time, remotely check readings, change settings, gather and chart history, and receive notification of alarm conditions.



*Take service reports to the next level.
Review system parameters and performance
with customized history graphs.*